



Lumens[®]

| CamConnect Pro & Televic D-Cerno AE Setting Guide

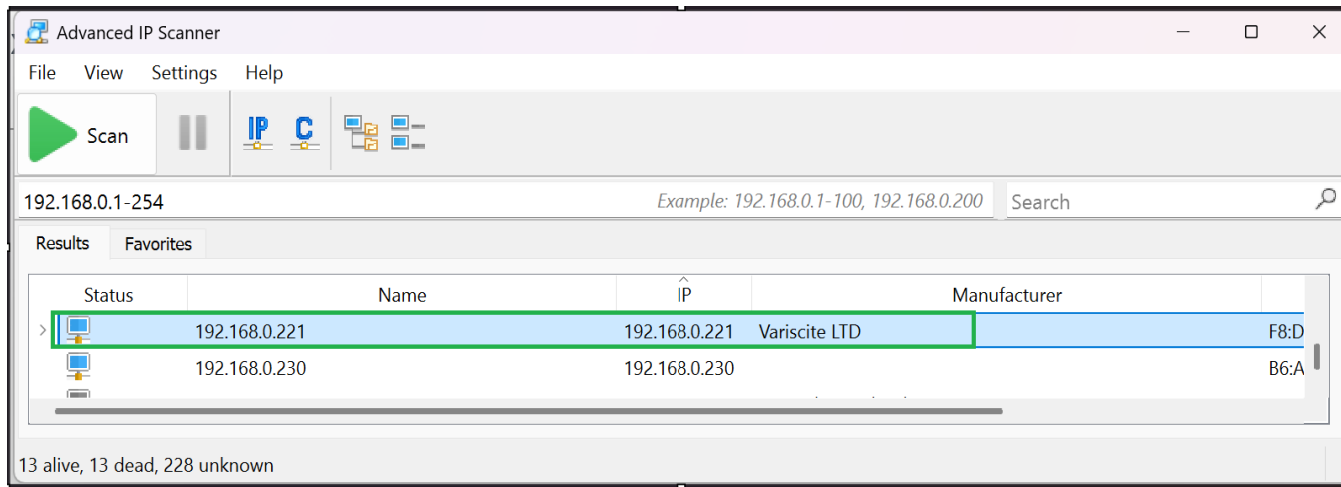
Overview

1. Discovering D-Cerno AE's IP
2. D-Cerno AE as Technician and mode selection
3. D-Cerno AE Key/Token for CamConnect Pro session
4. Televic D-Cerno AE HTTP/HTTPS
5. Download and Install OpenSSL.exe
6. Generate certification and key
7. Upload certification and key to complete setting
8. D-Cerno AE connection with CamConnect Pro
9. CamConnect Pro and D-Cerno AE- Camera mapping
10. Others

1. Discovering D-Cerno AE's IP

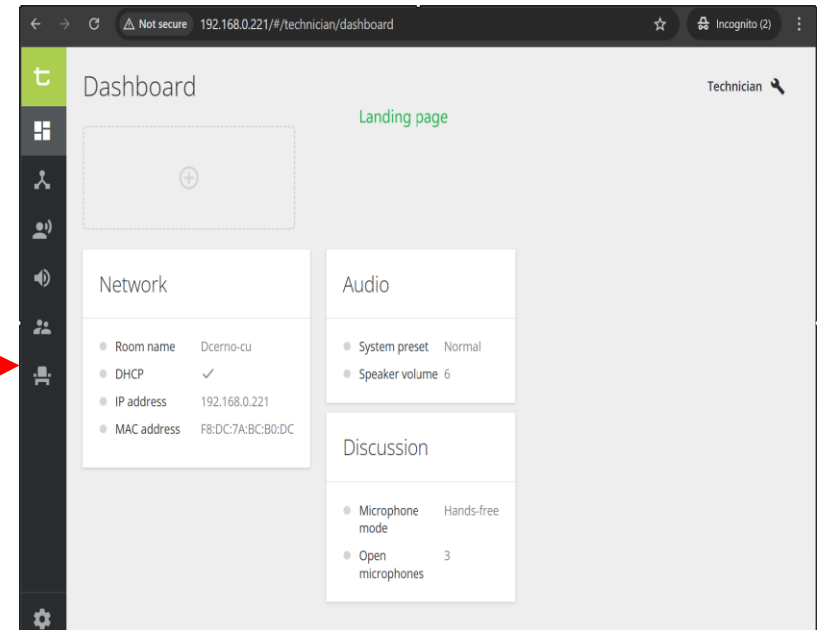
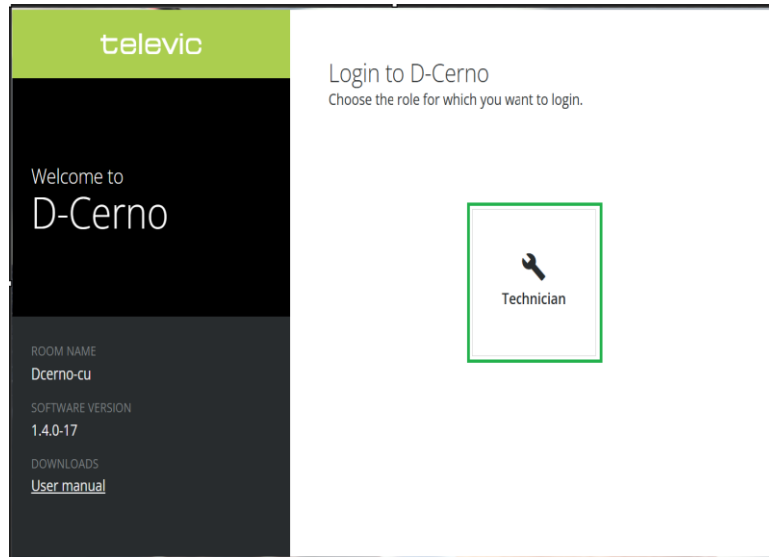
- The Manufacturer's name of D-Cerno AE will be shown as **Variscite LTD**.
- Use any tool to scan for this device's IP in your Network.

Ex. Advanced IP Scanner resolves. (D-Cerno AE's IP = 192.168.0.221)



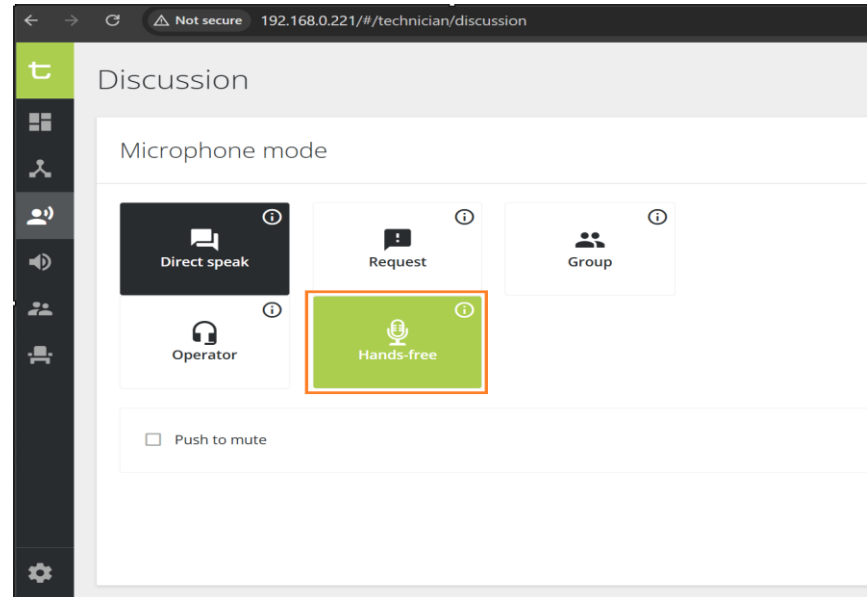
2. D-Cerno AE as Technician and mode selection

- Enter D-Cerno AE's IP address in a web browser.
- Access its configuration as Technician;



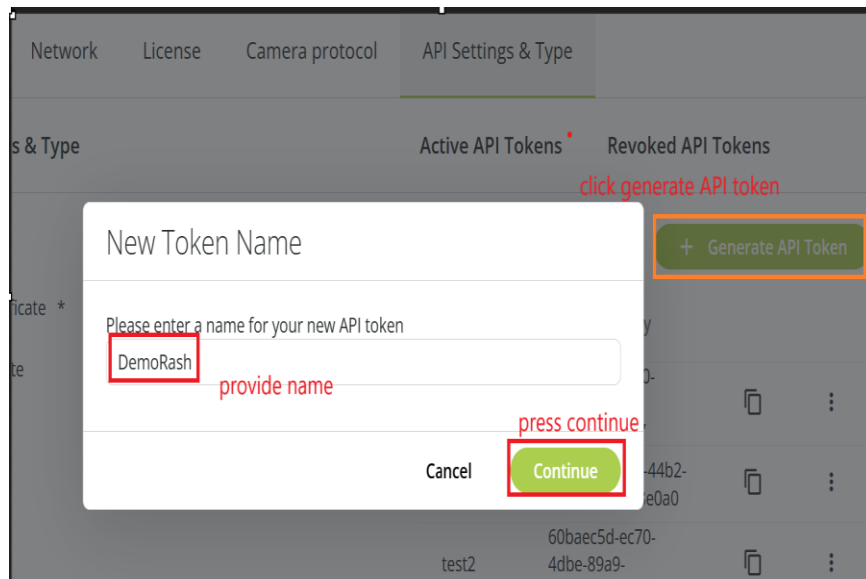
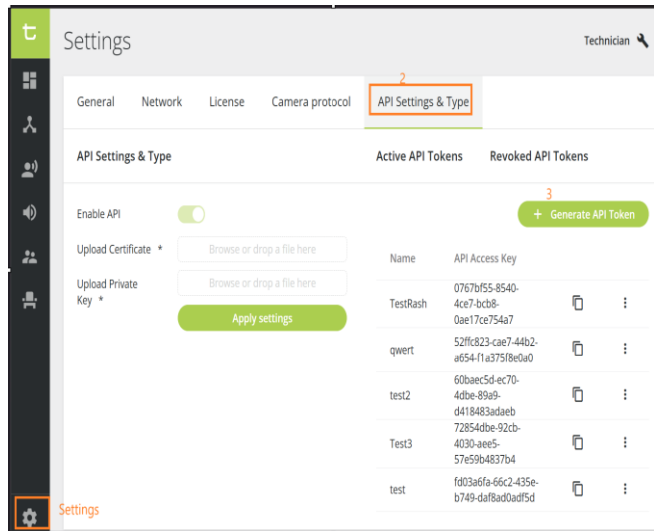
2. D-Cerno AE as Technician and mode selection.

- Navigate to [Discussion] section and select a preferred mode.
- In this example, [Hands free] mode is shown.
- Click on mode until it turns green.



3. D-Cerno AE Key/Token for CamConnect Pro session

- Navigate to [settings] → [API Settings & Type].



3. D-Cerno AE Key/Token for CamConnect Pro session

- Copy and paste the generated token in CamConnect Pro's [API Access Key] field.

The screenshot displays two side-by-side panels from the Lumens CamConnect Pro interface.

Left Panel: Microphone Setting

- Section: 1. Televic:D-Cerno AE
- Section: Array Microphone
- Fields: Device (Televic:D-Cerno AE), Device IP, Port (9090), API Access Key (highlighted with an orange box), Connect, Time To Trigger Preset (1 Sec), Back to Home.
- Buttons: Apply, Cancel, Set.
- Annotation: "paste token in camconnect" with an arrow pointing to the API Access Key field.

Right Panel: API Settings & Type

- Tab: API Settings & Type
- Section: API Settings & Type
- Fields: Enable API (toggle), Upload Certificate * (Browse or drop a file here), Upload Private Key * (Browse or drop a file here), Apply settings.
- Section: Active API Tokens
- Table:

Name	API Access Key	
TestRash	0767bf55-8540-4ce7-bcb8-0ae17ce754a752ffc823-cae7-44b2-a654-f1a375f8e0a060baec5d-ec70-4dbe-89a9-d418483adaeb72854dbe-92cb-4030-ae5-57e59b4837b4	
qwert	8647cf73-08bb-4137-bcdb-16c4995306a5fd03a6fa	
test2		
Test3		
DemoRash		

Annotation: "copy token" with an arrow pointing to the API Access Key of the DemoRash token.

4. Televic D-Cerno AE HTTP/HTTPS

- Using HTTP protocol to connect D-Cerno AE connection with CamConnect Pro, please jump to **Step7** for the rest of setting.
- Using HTTPS protocol, please follow the next page to do the setting.

- **Limitations / Notes:**

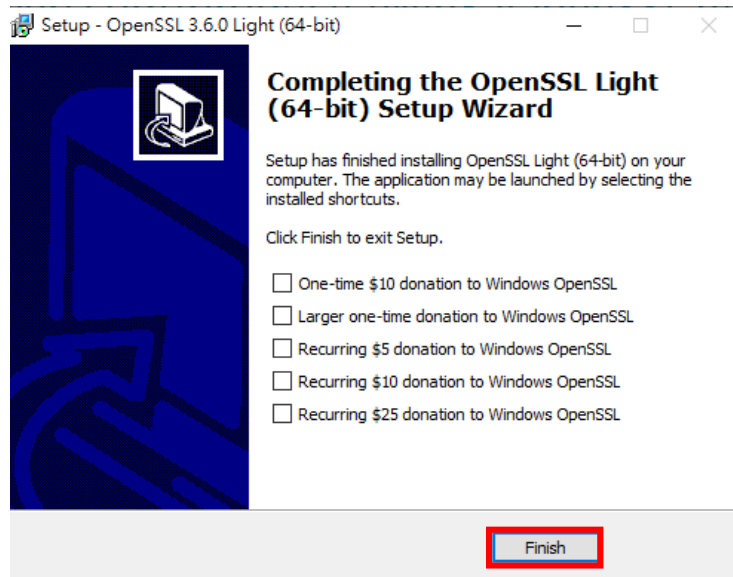
Once the certification is uploaded, the device will switch to HTTPS mode, and HTTP will no longer be available.

To return to HTTP mode, a hardware reset of the device is required to reconfigure it.

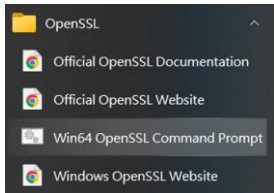
5. Download and Install OpenSSL.exe

1. Go to <https://slproweb.com/products/Win32OpenSSL.html>, download OpenSSL.exe (follow your PC OS environment)
2. Complete the OpenSSL installation and ignore the donation page.

File	Type
Win64 OpenSSL v3.6.0 Light EXE MSI	6MB Installer
Win64 OpenSSL v3.6.0 EXE MSI	248MB Installer
Win32 OpenSSL v3.6.0 Light EXE MSI	5MB Installer
Win32 OpenSSL v3.6.0 EXE MSI	207MB Installer
Win64 OpenSSL v3.6.0 Light for ARM (EXPERIMENTAL) EXE MSI	6MB Installer
Win64 OpenSSL v3.6.0 for ARM (EXPERIMENTAL) EXE MSI	207MB Installer
WinUniversal OpenSSL v3.6.0 Light for all architectures (EXPERIMENTAL) EXE	15MB Installer
WinUniversal OpenSSL v3.6.0 for all architectures (EXPERIMENTAL) EXE	174MB Installer



1. Execute Win64 OpenSSL Command Prompt



2. Enter below command:

```
openssl req -x509 -newkey rsa:2048 -keyout  
server.key -out server.crt -days 365 -nodes
```

Country Name (2 letter code) [AU]: e.g. TW

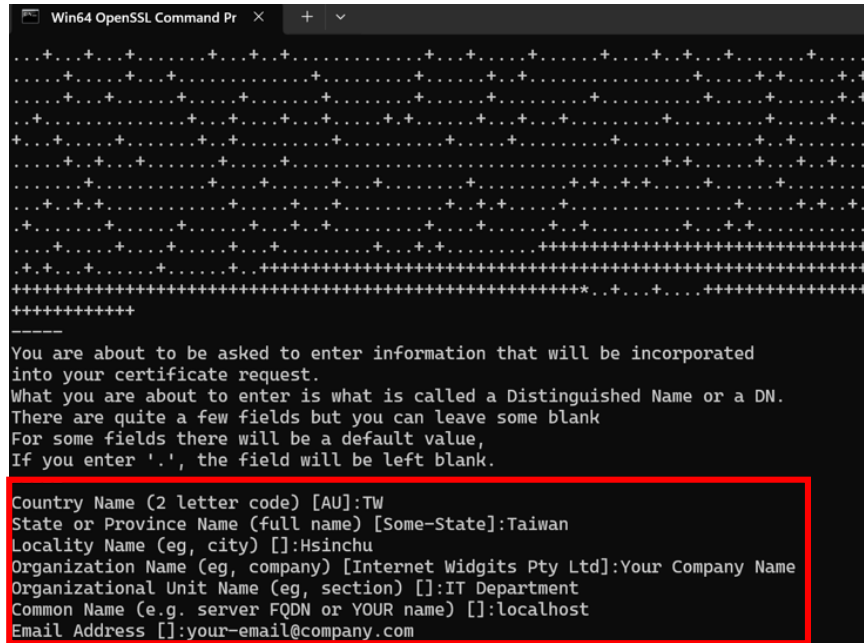
State or Province Name [Some-State]: e.g. Taiwan

Locality Name []: e.g. Hsinchu

Organization Name []: e.g. Lumens

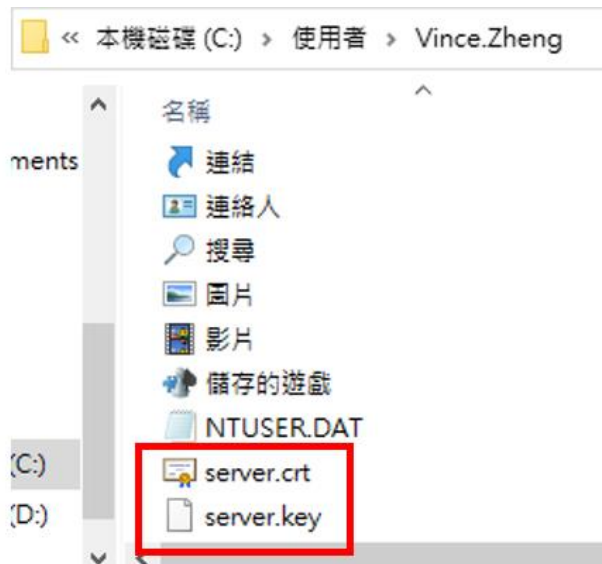
Organizational Unit Name []: e.g. IT Department

Common Name []: localhost

Email Address []: your-email@company.com

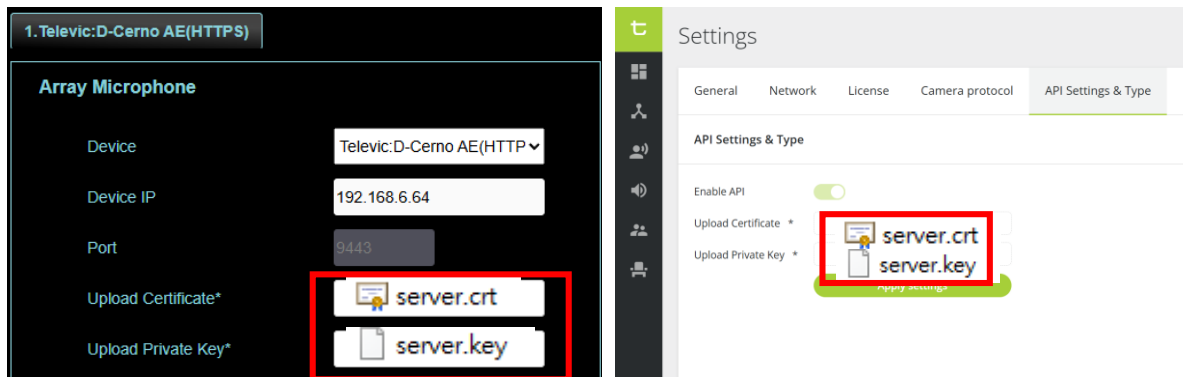
6. Generate certification and key

3. Certification and key are generated in this folder:
C:\Users\[Username]



7. Upload certification and key to complete setting

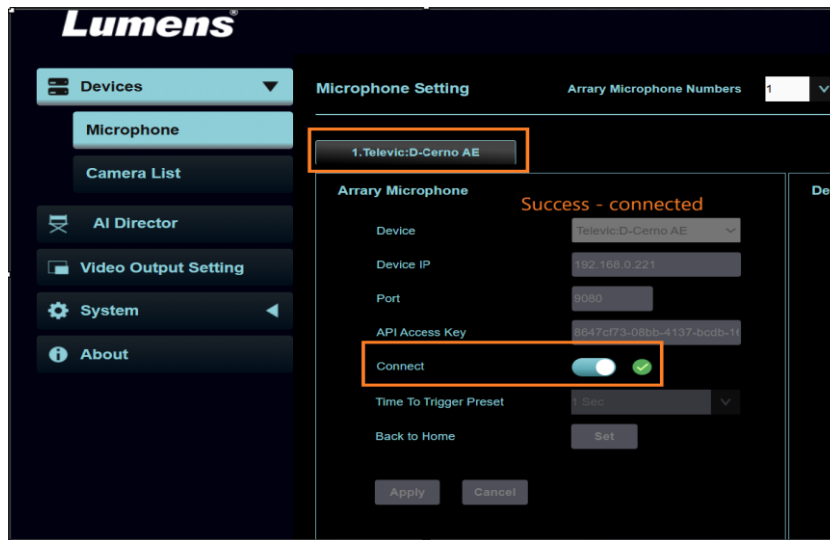
Upload certification and key to CamConnect Pro and Televic D-Cerno AE.



8. D-Cerno AE connection with CamConnect Pro.

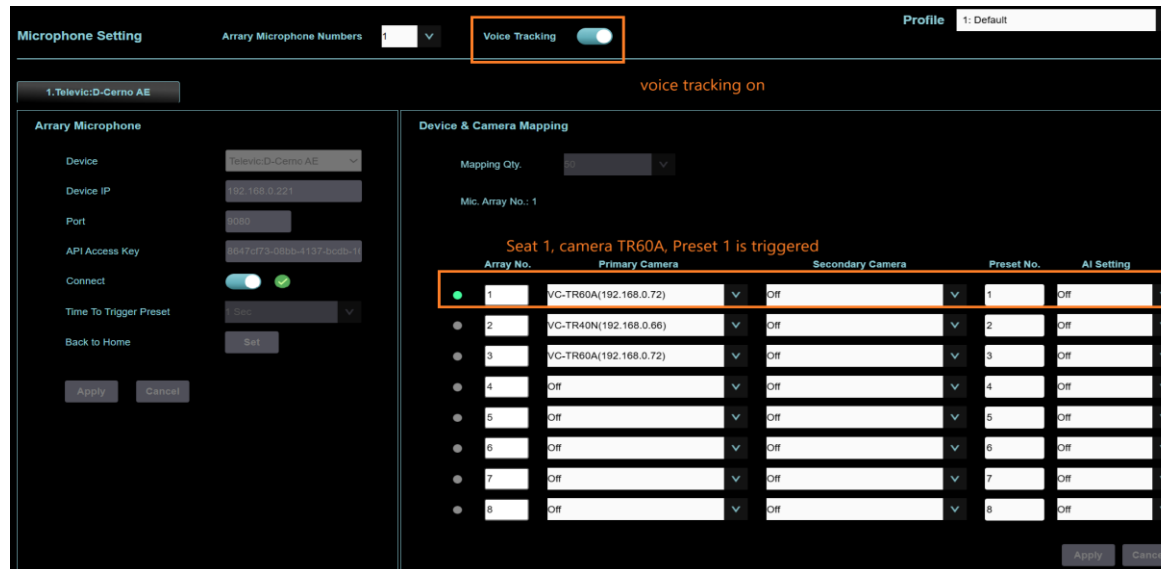
In CamConnect Pro's web browser; (as shown below)

- Enter D-Cerno AE's IP address.
- Paste API key as shown in previous slide.
- Make other settings like; time to trigger and back to home as you wish.
- Hit Apply then toggle the Connect button to the right.



9. CamConnect Pro & D-Cerno AE - Camera mapping

- Map camera presets per D-Cerno C & D SL units/seats.
- For example; 2 cameras and 3 seats are assigned in hands free mode.
- Below image shows; Seat 1 talker triggers camera TR60A preset 1:



10. Others

- In hands free mode, a maximum of 17 microphones is supported.
- Do not place microphones less than 1m apart from each other.
- Update your D-Cerno AE, D & C SL to latest firmware (ex. 1.4.0 -17).
- Read carefully the D- Cerno AE's installation manual, especially the sections; [installation], [Technician] and [operator and chairperson]. This ensures a seamless operation with CamConnect Pro or have a certified Televic D-Cerno AE personel setup the room and then integrate with CamConnect Pro.
- Contact Lumens for technical support if any of above guide is unclear.

Thank You!



MyLumens.com



Contact Lumens

